



RYETEC MP & SL COMPACT SIDE ARM FLAIL & FINGERBAR MOWERS

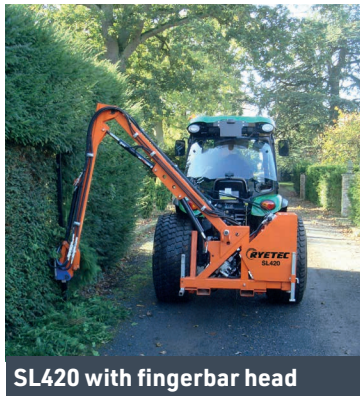
Two different ranges:

MP

- » For tractors from 16hp
- » Reach from 3.05m
- » For regular light trimming duties

SL

- » For tractors from 20hp
- » Reach from 3.20m
- » For professional users



SL420 with fingerbar head



SL420 with flail head

Head rotation - the key to flexible hedge cutting

Rytec sidearms have the head fitted at one end of the head (MP) or behind the head (SL). This feature allows the flail head to rotate up to 246° to cut close to the tractor in the vertical position in narrow lanes and allow the machine to level top very high hedges, whereas machines designed primarily for grass cutting have the arm mounted on top of the flail giving limiting the head angle to a maximum of 180°.

Main Picture: SL420 with arm mounted behind the head.

This makes it capable of level topping a 3.4m (11'4") high hedge, i.e. measurement 'D' on the table overleaf.

Standard specification includes

- » Twin pump independent hydraulics
- » Reversible rotor
- » Cable controls (Joystick option)
- » Mechanical break back device
- » Robust heavy duty construction
- » High visibility orange paint finish
- » Adjustable roller on SL models
- » Optional flails and fingerbar head
- » High power SL420H has 25hp head drive motor (38% increase on standard machine)

Counter balance oil tank

The MP and SL models (not available on SL420H) feature a unique sliding counter balance oil tank for increased stability on compact tractors when using full reach (optional hydraulic sliding ram fitted in photos).



Tank in



Tank out

For more information contact Ryetec Industrial Equipment Limited
Mill House, A64 East Knapton, Malton, North Yorkshire YO17 8JA
T: 01944 728 186 | www.ryetec.co.uk | [f /ryetec](https://www.facebook.com/ryetec)

RYETEC
Specialist Machinery For Forestry, Amenities & Farming

SPECIFICATIONS

Model	Reach with flail (fingerbar) (m)	Cutting width of flail (m)	Weight with flail head (kg)	No & type of flails (opt)	Head motor power	Oil tank capacity (l)	Tractor weight (kg)	Min tractor HP
MP300	3.05 (4.4)	0.8	340	20 x T4 (40xT15)	18	65	750*	16
SL320	3.20 (4.55)	0.9	410	40 x T15 (20 x B1)	18	75	1000*	20
SL420	3.80 (5.15)	1.0	440	40 x T15 (20 x B1)	18	75	1200*	25
SL420H	3.85 (5.15)	1.0	500	40 x T15 (20 x B1)	25	100	1500*	35
SL420HP	3.85 (5.15)	1.0	500	40 x T15 (20 x B1)	40	100	1500*	45

* Tractor weight indicated can include ballast

Tractor requirements for all machines

3 point linkage 540rpm PTO shaft

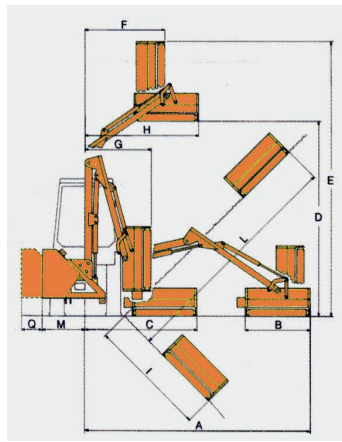
NB. Specialist guarding required when using flail head on tractors without cabs. Please ask for details.

Optional extras

- » Joystick controls (See photo)
- » Cutting flails
- » Fingerbar cutting head
- » Standard fingerbar size is 1.8m (other sizes available)



Machines feature a multi position lower ram to allow for both class leading level topping height and the ability to mow in ditches as seen above.



MP300
Paddle Flail
08-21-89



MP300
Y Flail
08-21-86



SL320
Y Flail
08-21-13



SL420
Y Flail
08-21-51



SL420 + SL320
Hammer Flail
08-23-90

DIMENSIONS (M)

Model	A	B	C	D	E	F	G	H	I	L	M	Q
MP300	3.05	0.80	1.25	2.65	3.80	1.55	0.70	2.05	1.90	3.20	0.60	0.35
SL320	3.20	0.90	1.80	3.00	4.10	1.15	0.95	1.50	1.60	3.30	0.60	0.35
SL420	3.80	0.90	1.60	3.40	4.65	1.60	0.90	1.60	2.00	3.90	0.60	0.35
SL420H/P	3.85	1.00	1.65	3.40	4.70	1.60	0.90	1.65	2.05	3.95	0.75	N/A

For more information contact Ryetec Industrial Equipment Limited
Mill House, A64 East Knapton, Malton, North Yorkshire YO17 8JA
T: 01944 728 186 | www.ryetec.co.uk | [f /ryetec](https://www.facebook.com/ryetec)

